

**INFORMATION BULLETIN**  
**NATIONAL**  
**ORIENTEERING EVENT**  
**CAMPRA**  
**27-28 AUGUST 2022**

**IOF World Ranking Events (Forest)**

**JEC Trial events**

**Swiss PISTE H/D16-20**

Main sponsors:




**Assicurati in modo sano**



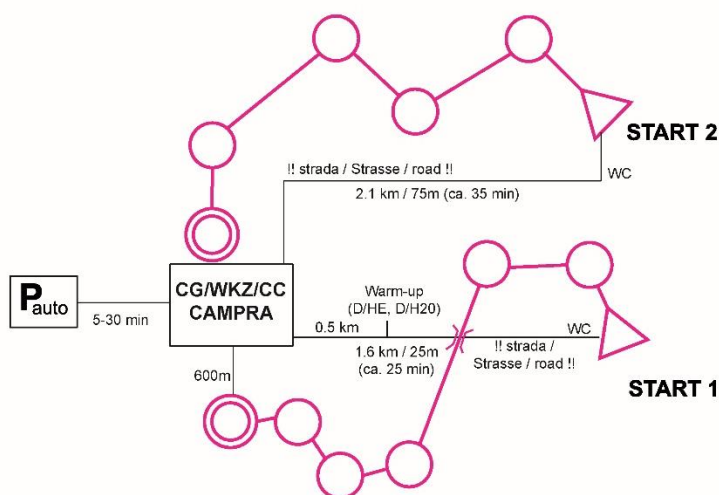
BANCA DELLO STATO DEL CANTONE TICINO

## INFORMATION BULLETIN ORIENTEERING EVENT IN TICINO

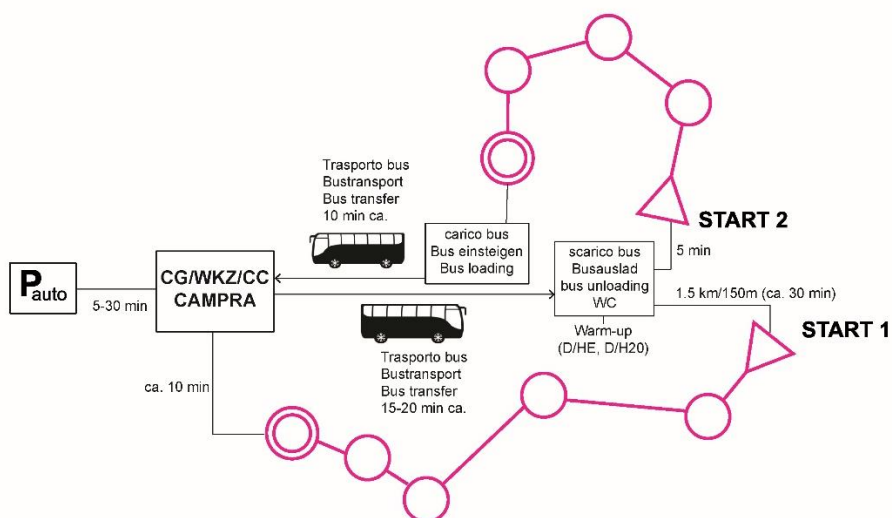
	<p>8. National Event (middle distance) <b>Saturday, 27 August 2022</b></p> <p>Campra</p> <p>IOF World Ranking Event (forest) JEC Trial event Swiss PISTE H/D16-20</p>	<p>9. National Event (long distance) <b>Sunday, 28 August 2022</b></p> <p>Dötra and Pian Segno</p> <p>IOF World Ranking Event (forest) JEC Trial event Swiss PISTE H/D12-20</p>
---	---	---

### Key points in a nutshell

#### Summary scheme SATURDAY, 27.08.2022, Middle Distance



#### Summary scheme SUNDAY, 28.08.2022, Long Distance



# CAMPRA 8. – 9. naz DÖTR 27. – 28. 08. 2022

4

Courses information <b>SATURDAY, 27.08.2022,</b> Middle Distance		km	m	Controls	Start	Scale
	HE	4.3	295	23	1	1:10'000
	HAL	3.6	250	18	1	1:10'000
	HAM	2.7	210	16	1	1:10'000
	HAK	3.4	90	16	2	1:10'000
	HB	2.6	55	13	2	1:10'000
	H35	3.3	215	19	1	1:10'000
	H40	3.7	230	19	1	1:10'000
	H45	3.4	230	21	1	1:10'000
	H50	2.9	200	18	1	1:7'500
	H55	2.8	210	18	1	1:7'500
	H60	3.6	120	18	2	1:7'500
	H65	3.0	105	16	2	1:7'500
	H70	2.8	80	15	2	1:7'500
	H75	2.7	55	13	2	1:7'500
	H80	2.2	50	11	2	1:7'500
	H85	2.2	50	11	2	1:7'500
	H20	4.3	295	23	1	1:10'000
	H18	3.3	195	20	1	1:10'000
	H16	3.9	125	20	2	1:10'000
	H14	3.3	85	17	2	1:10'000
	H12	2.7	55	12	2	1:10'000
	H10	2.3	40	12	2	1:10'000
	DE	3.5	245	20	1	1:10'000
	DAL	2.6	210	18	1	1:10'000
	DAM	2.3	155	18	1	1:10'000
	DAK	2.7	65	13	2	1:10'000
	DB	2.3	65	12	2	1:10'000
	D35	2.5	190	15	1	1:10'000
	D40	2.6	210	15	1	1:10'000
	D45	2.6	170	17	1	1:10'000
	D50	2.7	160	17	1	1:7'500
	D55	2.3	140	15	1	1:7'500
	D60	2.9	80	14	2	1:7'500
	D65	2.8	70	15	2	1:7'500
	D70	2.2	55	11	2	1:7'500
	D75	2.1	30	9	2	1:7'500
	D80	2.1	30	9	2	1:7'500
	D20	3.5	245	20	1	1:10'000
	D18	2.4	150	16	1	1:10'000
	D16	3.6	115	16	2	1:10'000
	D14	3.3	75	15	2	1:10'000
	D12	2.6	50	11	2	1:10'000
	D10	2.1	40	11	2	1:10'000
	OL	2.8	70	15	2	1:10'000
	OM	2.5	50	14	2	1:10'000
	OK	2.1	35	11	2	1:10'000

# CAMPRA 8. – 9. naz DÖTR 27. – 28. 08. 2022

5

Courses information <b>SUNDAY, 28.08.2022,</b> Long Distance		km	m	Controls	Start	Scale
	HE	11.5	530	22	1	1:15'000
	HAL	8.9	400	17	1	1:15'000
	HAM	6.4	220	14	1	1:10'000
	HAK	3.8	155	12	2	1:10'000
	HB	3.8	160	14	2	1:10'000
	H35	7.1	240	14	1	1:10'000
	H40	7.3	285	15	1	1:10'000
	H45	6.9	270	14	1	1:10'000
	H50	6.7	230	14	1	1:7'500
	H55	6.5	190	16	1	1:7'500
	H60	5.6	160	14	1	1:7'500
	H65	5.2	125	16	1	1:7'500
	H70	4.1	155	14	2	1:7'500
	H75	3.3	160	13	2	1:7'500
	H80	2.8	120	10	2	1:7'500
	H85	2.8	120	10	2	1:7'500
	H20	9.1	380	17	1	1:15'000
	H18	8.0	245	16	1	1:15'000
	H16	6.7	195	15	1	1:15'000
	H14	5.1	195	16	2	1:10'000
	H12	3.7	140	13	2	1:10'000
	H10	2.5	30	11	2	1:10'000
	DE	8.7	330	16	1	1:15'000
	DAL	6.2	170	12	1	1:15'000
	DAM	4.7	100	12	1	1:10'000
	DAK	3.2	160	9	2	1:10'000
	DB	3.4	150	11	2	1:10'000
	D35	5.1	130	13	1	1:10'000
	D40	5.0	130	13	1	1:10'000
	D45	5.0	125	12	1	1:10'000
	D50	5.0	120	12	1	1:7'500
	D55	4.8	110	12	1	1:7'500
	D60	3.9	195	13	2	1:7'500
	D65	3.7	175	15	2	1:7'500
	D70	2.8	180	11	2	1:7'500
	D75	2.4	120	11	2	1:7'500
	D80	2.4	120	11	2	1:7'500
	D20	6.5	235	11	1	1:15'000
	D18	5.6	140	12	1	1:15'000
	D16	5.1	125	11	1	1:15'000
	D14	4.7	195	13	2	1:10'000
	D12	3.5	110	11	2	1:10'000
	D10	2.5	25	11	2	1:10'000
	OL	5.0	190	16	2	1:10'000
	OM	3.6	140	12	2	1:10'000
	OK	2.4	30	11	2	1:10'000

# CAMPRA 8. – 9. naz DÖTR 27. – 28. 08. 2022

6



## General information valid for both SATURDAY UND SUNDAY

**Protected marshes:** indicated as "out of bounds" on the map and, when encircled by a line, marked with streamers on the terrain. Entry is strictly prohibited and is punished with disqualification. Controls will be run by the organizers. Also «out of bounds» areas not specifically marked with streamers can under no circumstances be entered and must be strictly respected (Fair Play!).



**Temporary fences:** can be used by farmers for grazing cattle and are usually not mapped. Please be careful and if they get torn down or damaged, please notify as soon as possible the organizers.

## Specific information for SATURDAY

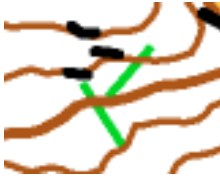
### Valid for both Start 1 and Start 2

- The way to the start is partially on a road with significant traffic: please be careful and walk on the road edge!
- In the winter time Campra is a cross-country skiing area: most tracks are mapped as grass strips (example: picture). Should there be traces in the middle, they are mapped as path.





- Fallen trees that impair significantly progress are mapped with a green line (see example from the map)



- Only the largest rootstocks are mapped
- If there are heavy rains in the days preceding the event, please be careful when you cross the streamers. In such cases bridges must be used (see examples). Should this happen, the corresponding information will be made available at the start the day of the event.



- It is strictly forbidden to cross or to run on the main road (cantonal road), but running along the road beyond the road edge is possible. The road is mapped as «out of bounds» area (see example)



- The cross-country skiing bridges that cannot be used are not mapped

## VALID ONLY FOR START 1

- The way to Start 1 passes partially through the competition area; please do not leave the marked path (exception: warm-up area).
- A mandatory crossing of the main road (cantonal road) between two controls is monitored by security people, nevertheless caution is advised.
- Some courses pass next to an area with temporary wooden platforms used for summer camping; this area is mapped as «out of bounds» and cannot be entered
- The way from the Finish to the Competition Center is marked and must be strictly followed



## VALID ONLY FOR START 2

A passage along a slope is mapped as «marked passage» and is marked in the terrain with streamers (see example).



## Specific information for SUNDAY

- High-voltage electric lines are not mapped; however, the masts are mapped with corresponding symbol.
- Rootstocks are not mapped
- In various areas there are «cattle tracks» that can appear as paths (see picture); they are not mapped.



- Special symbol for a small, U-shaped re-entrant on a slope of an approx. size of 5x5 meters





Example:



# CAMPR 8. – 9. naz DÖTR 27. – 28. 08. 2022

10

Organizing Clubs	ASCO Lugano and Orientisti 92 Piano di Magadino	
	 	
Event Director	Sergio Cantoreggi	
Course Planners	Vasco Bolis	Stefano Castelli
Controllers	Alberto Pura	Michele Ren
Event Advisers	Felice Büchi	Stefan Schlatter
Information	Karin Bernasconi, <a href="mailto:info@naz2022.o-92.ch">info@naz2022.o-92.ch</a> , 079 480 93 11	
Competition Center (CC)	Centro Sci Nordico Campra, 6718 Olivone <a href="http://www.campralodge.ch">www.campralodge.ch</a>	
Opening hours CC	Saturday open from 11:00	Sunday open from 8:30
Changing rooms /Showers	Changing rooms at the Competition Center (CC) for Ladies and Gentlemen. No showers but washing possibility (cold water)	
Maps	<p>Campra</p> <p>1:10'000 (Start 1) H/DE; H/DAL; H/DAM; H/D35; H/D40; H/D45; H/D20; H/D18</p> <p>1:10'000 (Start 2) H/DAK; H/DB; H/D16; H/D14; H/D12; H/D10; OL; OM; OK</p> <p>1:7'500 (Start 1) H/D50; H/D55</p> <p>1:7'500 (Start 2) H/D60, H/D65; H/D70; H/D75; H/D80; H85</p> <p>Status: May 2022</p> <p>Contours: 5 meters</p>	<p>Campra-Dötra (Start 1)</p> <p>1:15'000 (H/D16; H/D18; H/DAL; H/D20; H/DE)</p> <p>1:10'000 (H/D35; H/D40; H/D45; H/DAM)</p> <p>1:7'500 (H/D50; H/D55; H60; H65).</p> <p>Piansegno (Start 2)</p> <p>1:10'000 (H/D10; H/D12; H/D14; H/DAK; H/DB; OK; OM; OL)</p> <p>1: 7'500 (D60; D65; H/D70; H/D75; H/D80; H85)</p> <p>Status: May 2022</p> <p>Contours: 5 meters</p>
	Printing of the maps in 1:7'500 scale is generously supported by the OL-Gönnerclub!	
Starting times	13:00 – approx 17:45	10:00 – approx 13:30
CC - Start	<p>Start 1: km 1.6, 25m climb (approx 25 min)</p> <p>Start 2: km 2.1, 75m climb (approx 35 min)</p>	<p>Bus transfer for everybody approx 15-20 min.</p> <p><b>NO DOBB-SPIKES IN THE BUS!</b></p> <p>Start 1: + 1.5 km, 170 climb (approx 30 min)</p> <p>Start 2: + 0.3 km, 15 climb (approx 5 min)</p> <p><b>RUNNERS TO START 2 HAVE TO CROSS THE MAIN ROAD: CAUTION!!</b></p>
Finish - CC	<p>Finish 1: approx 10 min to CC</p> <p>Finish 2: at the CC</p>	<p>Finish 1: approx 10 min to CC</p> <p>Finish 2: bus to CC (approx 10 min)</p> <p><b>NO DOBB-SPIKES IN THE BUS!</b></p>

Start order	Regional distribution for Swiss runners H/D Elite: based on the World ranking of 21 August 2022.	Regional distribution for Swiss runners H/D Elite: based on the World ranking of 21 August 2022.
Classes	All according to Swiss WO + D80/H85 In addition, Open long, medium and short	All according to Swiss WO + D80/H85 In addition, Open long, medium and short
Access by Public Transportation	The competition center is easily reachable from Biasca or from Disentis by bus (stop: Campra Centro nordico). At selected times bus courses don't end in Olivone but continue until Campra. Additional lines on Saturday evening from Campra to Disentis and on Sunday morning from Disentis to Campra. Timetable Biasca-Campra and Disentis-Campra and back: <a href="https://naz2022.o-92.ch/images/documenti/Orari_bus_Gara_Orientamento_I_D_E.pdf">https://naz2022.o-92.ch/images/documenti/Orari_bus_Gara_Orientamento_I_D_E.pdf</a>	
Access by caravan	Parking for caravanes 800 meters to CC in Campra; reservation fee chf 20. No electricity and water. WCs available at the parking area from Friday night. Please note that space is limited, alternative parking available in Olivone at Centro Polisport.	
Access by car	35 min from Biasca, 1h15 from Lugano, 1h30 from Chur, 2h30 from Zürich <b>Parking is limited</b> (please fill up the cars!), up to 30 minutes walking to CC	
Accommodation	Regional turist organization, Bellinzona e Valli, Carolina Cima, +41 91 872 14 87, <a href="mailto:carolina.cima@bellinzonaevalli.ch">carolina.cima@bellinzonaevalli.ch</a>	
WO classes	<b>Online</b> via <a href="http://www.go2ol.ch">www.go2ol.ch</a> by Monday, <b>15 August 2022</b> <b>Through standard bank wire transfer by Monday 08 August 2022</b> at IBAN CH58 0076 4199 2318 0200 1, Banca dello Stato, 6500 Bellinzona, for: Nat. OL Campra 2022, c/o Adriano Tonella, via Remorino 6, 6648 Minusio, indicating which event you are signing up for, Swiss Orienteering number if available, Si-Card number, class, name and surname, full address, year of birth, club, use of public transportation (yes/no)	
Late registrations	Possible for both events up to <b>Wednesday 24 August 2022 at 23:59</b> via E-mail to <a href="mailto:michele.dolfi@gmail.com">michele.dolfi@gmail.com</a> until slots are exhausted. A surcharge of CHF 10.- will be collected and can be paid at the Competition Center on the day of the respective event (but before the start)	
Registrations Open classes	11:00-15:00 at the Information Desk of the Competition Center only on the day of the event	8:30 -12:00 at the Information Desk of the Competition Center only on the day of the event
Fotos	With the registration you accept to be portrayed	
Prize-giving ceremony	<b>As quickly as possible after the last finisher at approx 18:40</b> <b>Only classes H/DE and H/D20 (first three of each class, monetary prizes)</b>	<b>As quickly as possible after the last finisher at approx 15:00</b> <b>Only classes H/DE and H/D20 (first three of each class, monetary prizes)</b>
Mutations	Possible only to notify change of SI Card (free of charge)	
Entry fees	2006 and younger: chf 13.- 2002-2005: chf 19.- 2001 and older: chf 32.- Open: based on the age as above; extra map chf 5.-	2006 and younger: chf 16.- 2002-2005: chf 22.- 2001 and older: chf 35.- Open: based on the age as above; extra map chf 5.- Surcharge of CHF 3.- to cover transport costs (bus) to the start

Bibs	Hanging at the CC, please help yourself. No bib no start. The same bib will be used for the competitions of Saturday (middle distance) and Sunday (long distance)	
WC	Available at the CC and as close as possible to the pre-starts	
Clothing transport	Not available	Only with bad weather
Water	No water at the start. Please put your empty PET bottles in the PET bags at the pre-start. THANK YOU!	
Warm-up	Warm-up map 500 meters on the way to Start 1 for DE/HE and D20/H20.	At the bus unloading for DE/HE and D20/H20.
Pre-start / Start procedure	<p>Standard procedure of Swiss national orienteering events Each runner is responsible to clear and check his/her SI-Card before the start. The SI-Card indicated in the registration must be used for the competition. Open classes have a dedicated entry gate at the pre-start, otherwise the procedure is the same as for the other classes.</p> <ul style="list-style-type: none"> <li>- Starting time - 4 minutes: starting time check, clear and check of SI-Card</li> <li>- Starting time - 3 minutes: control descriptions pick-up</li> <li>- Starting time - 2 minutes: verify arrangement of boxes with running maps</li> <li>- Starting time - 1 minute: check SI-Card and start check, entry to box with the maps of corresponding running class</li> <li>- Start signal: the map can be picked up only after the start signal sound.</li> </ul> <p>Every runner is responsible to start with the correct map. Exact starting point marked with an orienteering flag (without SI-Card)</p>	
Mandatory route to starting point	25 meters	Piansegno: 0 meters Dötra: 20 meters
Posten	Orange/white orienteering flags per Swiss WO with SPORTident unit (AIR+ function operating). Register the time with the SI-Card. If AIR+ doesn't work (SIAC battery empty), hold your SIAC in the hole on the unit to register the time. If the SPORTident unit doesn't work (neither acoustic nor optical signal) or if there is no unit, punch on your map and inform spontaneously the officials at the finish, write your full name on the map and hand it in for verification. Please inform accordingly also the officials at the SI-Card download.	
Courses printing	All courses are printed on the map. The controls must be reached in the foreseen order. The control descriptions (IOF symbols for all classes) are printed on the map.	
Refreshment points	Depending on the class, one or two refreshment points with water will be available only on Sunday (Map Dötra, Long distance)	
Maximum time	90 minutes	150 minutes
Finish closure	90 minutes after the last start	150 minutes after the last start
Download SI-Card	At the CC	
Abandonment	Runners who don't complete the course must download the SI-Card at the CC	
Competition maps	Can be kept after the finish (Fairplay).	
Competition judge	Gigi Pedrini	
Protest	<p>Before submitting a protest, please discuss the case with the competition judge. Should a mutually acceptable solution not be found, a protest in written form can be submitted at the Information desk up to 60 minutes after finish closure. People who submit a protest must remain available to the jury.</p>	
Jury	Stefan Schlatter, Simone Niggli, Ulu Aeschlimann	Michael Eglin, Matthias Niggli, Daniel Hadorn

First Aid	At the CC	At the CC and at the refreshment points on the courses
Anti-Doping	<p>All competitions are run under the Swiss Olympic doping rules (see <a href="http://www.antidoping.ch">www.antidoping.ch</a>). Anti-doping controls may be performed on runners of any class. With registration, the participants accept the rules of Swiss Olympic. In the D/HE and D/H20 classes, only those athletes having acknowledged the Swiss Olympic Association's anti-doping rules will be allowed to compete. More information and the acceptance form can be found at: <a href="https://www.swiss-orienteering.ch/files/2017_Antidopingerkl%C3%A4rung_d.pdf">https://www.swiss-orienteering.ch/files/2017_Antidopingerkl%C3%A4rung_d.pdf</a></p> <p>If not done already, before their start athletes can sign the anti-doping agreement of the Swiss Olympic Association directly at the Information Desk.</p>	
Insurance	<p>Each competitor is running at his/her own risk and is responsible to have adequate and personal insurance coverage. The organizers don't accept any liability to the extent permitted by law for accidents occurring before, during or after the competition. With registration, the participants accept these insurance provisions.</p>	
Annulation	<p>Will be communicated on <a href="https://naz2022.o-92.ch">https://naz2022.o-92.ch</a> and <a href="https://www.swiss-orienteering.ch">https://www.swiss-orienteering.ch</a></p>	
Event information, start lists, results, next bulletin	<p><a href="https://naz2022.o-92.ch">https://naz2022.o-92.ch</a> and <a href="https://www.swiss-orienteering.ch">https://www.swiss-orienteering.ch</a></p> <p>Live results: <a href="http://classifiche.asti-ticino.ch/o2rank/">http://classifiche.asti-ticino.ch/o2rank/</a></p>	
Nursery	<p>Available on both days for children aged 1 ½ year and older. Registration by Thursday, 25 August 2022 at <a href="mailto:caiamadda@bluewin.ch">caiamadda@bluewin.ch</a> (please indicate how many children and their age, Saturday and/or Sunday, allergies if any). In case of need please bring your own food and drinks for your children.</p>	
Media and press	<p>Antonio Kocsis, via alla Campagna 31, 6948 Porza, <a href="mailto:toncsi.kocsis@gmail.com">toncsi.kocsis@gmail.com</a>, 079 174 99 81</p>	
Catering	<p>Ample selection of Ticino culinary specialties. Possibility to dine on Saturday night (from 18:00h) by registering by 15 August 2022. Menu: salad, pasta with tomato sauce and dessert at a cost of CHF 20/person. <b>Only cash is accepted!</b></p>	
Competition Terrain	<p>The competition terrain is comprised of the flat areas and the low hills of <b>Campra</b> and parts of the surrounding slopes. The flat areas are mostly open or semi-open but there are also small forest patches; overall the runnability is good. The hilly areas and the slopes are wooded (conifers) and require technical accuracy and careful navigation. The runnability can be impaired by undergrowth and shrubs and is physically more demanding. The visibility is generally good or very good.</p>	<p>The competition terrain of <b>Campra-Dötra</b> is pre-alpine, and in the upper part presents with a wide basin which is essentially open but technically challenging in some parts. The lower part of the map is wooded (conifers), rich in orienteering features and with very few trails: navigation accuracy is required. The visibility is generally good and the runnability fair (wooded areas) to good (open areas).</p> <p>The <b>Pian Segno</b> competition area is characterized by a very diversified alpine terrain. The central part features a large floodplain with pastures, marshy areas, water streams</p>



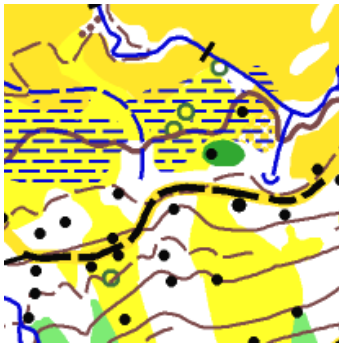
# CAMPR 8. – 9. naz DÖTR 27. – 28. 08. 2022

14

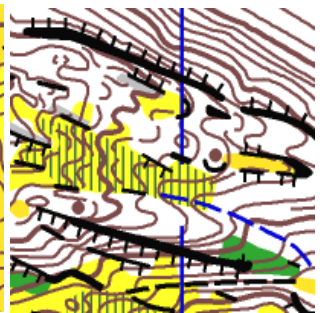
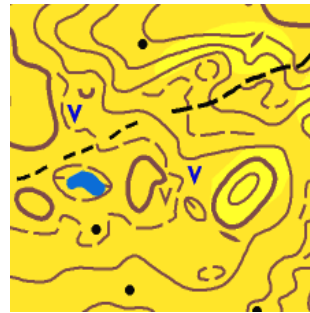
and small barns. The floodplain is surrounded by woods (conifers) which contain many stony grounds, rocks, and other orienteering features which make them technically interesting and challenging. Thanks to the many open areas, visibility and runnability are generally very good.

## Map samples

Campra:



Dötra:



Piansegno:

